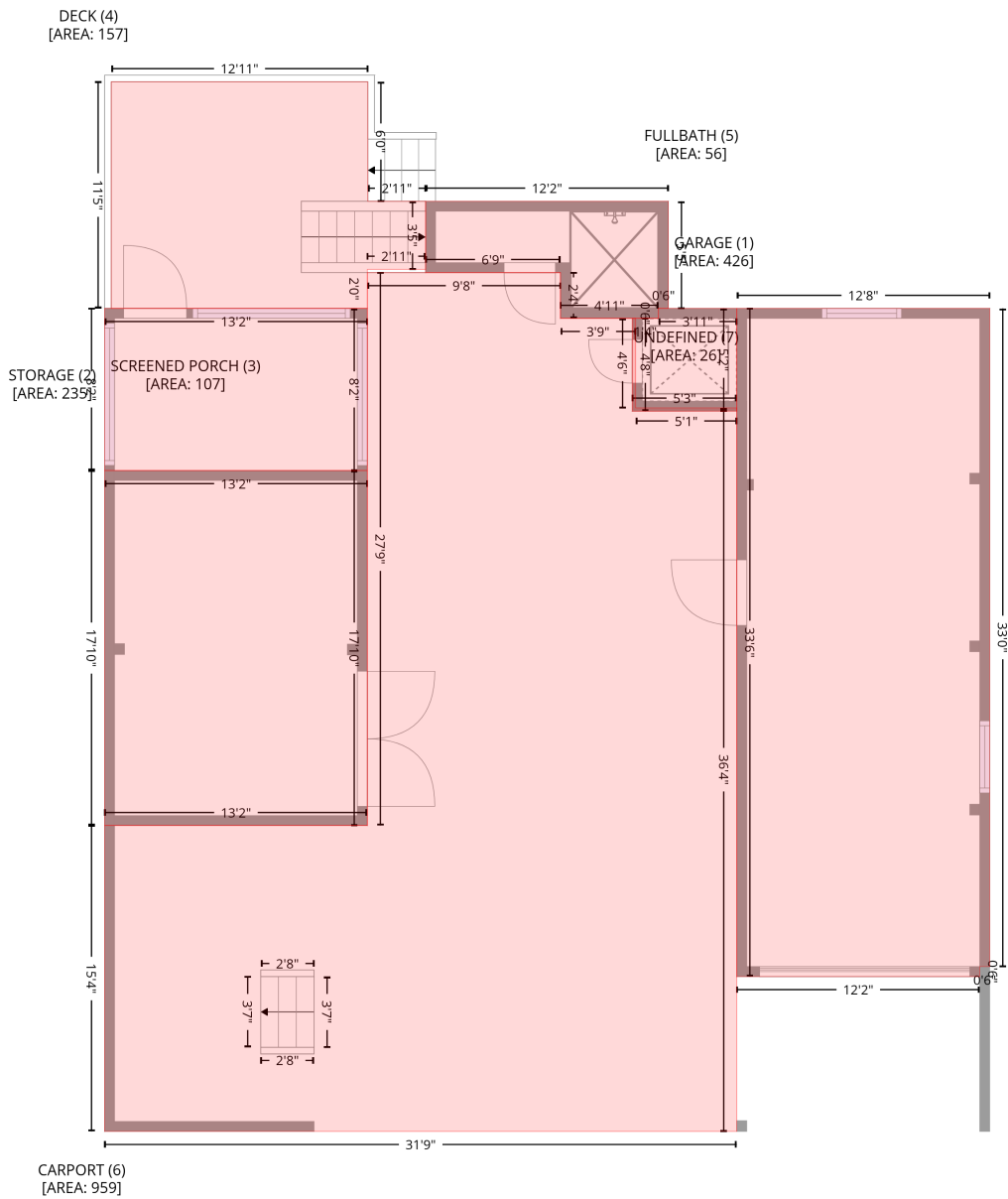


111 Southeast 17th Street, Oak Island, Brunswick County, North Carolina, United States, 28465

Gross Living Area: 1491 sq. ft

Level 1



Space	Area (sq. ft)	Calculation
Coordinate Polygon Area Algorithm using inches		
GARAGE (Non-living area)	426	$-\left((598.6 + 598.6) * (209.9 - 606.4) + (598.6 + 592.6) * (606.4 - 606.4) + (592.6 + 592.6) * (606.4 - 612.4) + (592.6 + 446.2) * (612.4 - 612.4) + (446.2 + 446.2) * (612.4 - 209.9) + (446.2 + 598.6) * (209.9 - 209.9)\right) * 0.5 * 0.00694$
STORAGE (Non-living area)	235	$-\left((223.4 + 223.4) * (307.6 - 521.5) + (223.4 + 65.1) * (521.5 - 521.5) + (65.1 + 65.1) * (521.5 - 307.6) + (65.1 + 223.4) * (307.6 - 307.6)\right) * 0.5 * 0.00694$
SCREENED PORCH (Non-living area)	107	$-\left((223.4 + 223.4) * (209.9 - 307.6) + (223.4 + 65.1) * (307.6 - 307.6) + (65.1 + 65.1) * (307.6 - 209.9) + (65.1 + 223.4) * (209.9 - 209.9)\right) * 0.5 * 0.00694$

111 Southeast 17th Street, Oak Island, Brunswick County, North Carolina, United States, 28465

Gross Living Area: 1491 sq. ft

Level 1

Space	Area (sq. ft)	Calculation
Coordinate Polygon Area Algorithm using inches		
DECK (Non-living area)	157	$-\left((223.8 + 223.8) * (73.4 - 145.4) + (223.8 + 258.6) * (145.4 - 145.4) + (258.6 + 258.6) * (145.4 - 186.4) + (258.6 + 223.4) * (186.4 - 186.4) + (223.4 + 223.4) * (186.4 - 209.9) + (223.4 + 69.1) * (209.9 - 209.9) + (69.1 + 69.1) * (209.9 - 73.4) + (69.1 + 223.8) * (73.4 - 73.4)\right) * 0.5 * 0.00694$
FULLBATH (Non-living area)	56	$-\left((404.9 + 404.9) * (145.4 - 209.9) + (404.9 + 398.9) * (209.9 - 209.9) + (398.9 + 398.9) * (209.9 - 215.9) + (398.9 + 339.9) * (215.9 - 215.9) + (339.9 + 339.9) * (215.9 - 188.4) + (339.9 + 258.6) * (188.4 - 188.4) + (258.6 + 258.6) * (188.4 - 145.4) + (258.6 + 404.9) * (145.4 - 145.4)\right) * 0.5 * 0.00694$
CARPORT (Non-living area)	959	$-\left((339.9 + 339.9) * (188.4 - 215.9) + (339.9 + 385.2) * (215.9 - 215.9) + (385.2 + 385.2) * (215.9 - 269.9) + (385.2 + 446.2) * (269.9 - 269.9) + (446.2 + 446.2) * (269.9 - 705.7) + (446.2 + 65.1) * (705.7 - 705.7) + (65.1 + 65.1) * (705.7 - 521.5) + (65.1 + 223.4) * (521.5 - 521.5) + (223.4 + 223.4) * (521.5 - 188.4) + (223.4 + 339.9) * (188.4 - 188.4)\right) * 0.5 * 0.00694$
UNDEFINED (Non-living area)	26	$-\left((446.2 + 446.2) * (209.9 - 271.8) + (446.2 + 383.1) * (271.8 - 271.9) + (383.1 + 383.1) * (271.9 - 215.9) + (383.1 + 398.9) * (215.9 - 215.9) + (398.9 + 398.9) * (215.9 - 209.9) + (398.9 + 446.2) * (209.9 - 209.9)\right) * 0.5 * 0.00694$

111 Southeast 17th Street, Oak Island, Brunswick County, North Carolina, United States, 28465

Gross Living Area: 1491 sq. ft

Level 2



Space	Area (sq. ft)	Calculation
2nd floor (Living area)	1491	$-\left((65.1 + 598.6) * (209.9 - 209.9) + (598.6 + 598.6) * (209.9 - 612.4) + (598.6 + 65.1) * (612.4 - 612.4) + (65.1 + 65.1) * (612.4 - 209.9)\right) * 0.5 * 0.00694$
PORCH (Non-living area)	322	$-\left((191.3 + 191.3) * (612.4 - 655) + (191.3 + 107.3) * (655 - 655) + (107.3 + 107.3) * (655 - 659) + (107.3 + 195.3) * (659 - 659) + (195.3 + 195.3) * (659 - 612.4) + (195.3 + 594.6) * (612.4 - 612.4) + (594.6 + 594.6) * (612.4 - 701.7) + (594.6 + 69.1) * (701.7 - 701.7) + (69.1 + 69.1) * (701.7 - 612.4) + (69.1 + 191.3) * (612.4 - 612.4)\right) * 0.5 * 0.00694$

111 Southeast 17th Street, Oak Island, Brunswick County, North Carolina, United States, 28465

Gross Living Area: 1491 sq. ft

Level 2

Space	Area (sq. ft)	Calculation
DECK (Non-living area)	20	<div>Coordinate Polygon Area Algorithm using inches</div> $-((385.2 + 385.2) * (151.4 - 209.9) + (385.2 + 336.8) * (209.9 - 209.9) + (336.8 + 336.8) * (209.9 - 151.4) + (336.8 + 385.2) * (151.4 - 151.4)) * 0.5 * 0.00694$